

Operators Check List

Picote Maxi Miller Power+

WARNING

DO NOT use the equipment if you have not been trained

For your personal safety always ensure that you have read and understood the Operation and Safety Manual and follow the instructions when installing tooling and using the machine.

Only use Picote tools designed for the 18mm ($\frac{3}{4}$ ") shaft

Recommended Pipe Diameter Range: DN150* to DN300 (6" – 12")

***DN100 (4") Straight Pipes Only**



Power Supply: 3-Phase, 400-480V, EU/UK: 16A USA:30A Failure to comply may lead to serious injury including electric shock or injury from rotating parts!



Danger risk of serious injury, follow instructions



Danger risk of serious injury from rotating parts

Personal Protective Equipment (PPE)

Always use Personal Protective Equipment including suitable protective clothing, footwear plus:



Suitable eye protection to protect against sewage, chemicals or dust from irritating eyes.



Suitable ear protection to protect against any hearing loss.



Suitable heat and cut resistant gloves to help prevent any hand injuries. Any open injuries or skin irritations should always be covered to avoid contact with sewage, chemicals or dust.

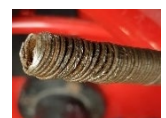


Suitable respirator to prevent any resin dust or fumes being inhaled or consumed, which could cause occupational asthma or dermatitis.

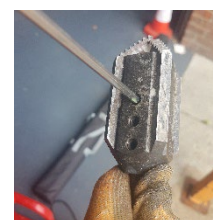
Before Operation

Before installing Picote tools, always make sure that the machine is fully turned off and unplugged.

- Always lay the machine down horizontally on the floor.
- Before use always inspect the flexible shaft. If there are potential weak points, or the shaft is damaged, cut off the damaged length using an angle-grinder. This should be done outside in a clear area as the process will generate sparks.
- Always round off the sharp edges of the shaft to avoid cuts and to make it easier to insert the shaft into the tooling.
- Check that there is sufficient length of exposed flexible shaft, without its outer casing, to attach tooling and allow for shaft movement.
- Check that all tooling screws have been loosened so that the shaft can be easily inserted inside the tooling. Position the shaft inside the tooling as far as it will go. Tighten the screws starting from the furthest screw from the end of the shaft.
- Use a "Sleeve" over the end of the outer casing to prevent it from melting.



Damaged Shaft – needs to be trimmed back



"Sleeve"



Starting & Using the Machine

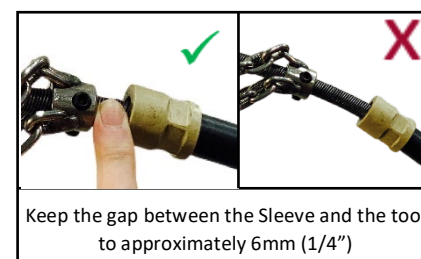
- Make sure the pipe has been opened and ventilated to prevent any gases accumulating.
- When using the Power+ machines ensure that the pipes are grounded (earthed) as the tooling creates high friction and there is risk of electric shocks.
- Choose the correct size tool for your job. Always use the largest size that will fit inside the pipe and go around any bends.
- When using the Power+ the shaft should be taken completely out from the reel as it significantly improves the power transferred to the tooling and prevents the outer casing from melting.

Do not use the machine in REVERSE mode as the shaft will unravel

- NEVER POWER ON THE PICOTE POWER+ OUTSIDE OF THE PIPE! The tooling needs to fit completely inside the pipe before turning the power on. Failure to comply could lead to serious injury or death.
- For your own safety, if not using a “leader” attach a visual marker (tape) on the outer casing of the flexible shaft around 500mm (20”) from the end of the shaft. The marker will indicate the tooling’s location and help prevent possible injury from the rotating parts by alerting you when the tooling is about to exit the pipe.
- Ensure water is flowing in the pipe or that vacuum extraction is used (dry cleaning).
- Do not extend the shaft by more than 2 x 11 metre (36’) extension. Only use a Picote Shaft Extension and Picote Shaft Connector.

During Use

- Do not force the tooling through the pipe — let the tool do the work. Too much force or speed may cause the tooling to get stuck, resulting in tooling or shaft breakage and possible pipe damage.
- Use either water or vacuum to remove debris
- Where water cooling is not used (air / vacuum situations), take breaks every 10—15 minutes, as the tool head gets very hot during use.
- Always observe the temperature of the outer casing and let the Picote Power+ cool down after every 30 minute period of constant work.



Always wear heat and cut resistant gloves when handling the tools after the machine has been switched off and unplugged. The tools can be cooled down by placing them in a bucket of cold water or left to cool in the open air.

Maintenance

Before performing any maintenance always make sure that the machine is fully turned off and unplugged.

- Always inspect the condition of the shaft and when needed apply Picote Miller Flexible Shaft Lubricant between the flexible shaft and its outer casing. If necessary, remove the shaft from its casing to treat. When the casing has been replaced, rotate the shaft for even coverage.
- Once a week remove the hand guard and check the tightness of the screws on the shaft connection. If loose, apply Loctite 542 to the threads and re-tighten.
- Every 3 months lubricate the flexible shaft with Picote Miller Flexible Shaft Lubricant (available from your reseller).
- Replace any fastener screws immediately if you are unable to fully tighten them due to worn out hex socket heads as the tooling could fall into the pipe.
- Please refer to the Operation and Safety Manual before undertaking any work. Ask your reseller or contact Picote for further information. www.picoteinstitute.com



3-Phase 400 – 480V EU/UK 16A, USA 30A Power Supply - Electrical shock can cause serious or fatal injury. Only qualified personnel should install, maintain or troubleshoot this equipment