

## OPERATOR CHECKLIST



**DO NOT USE THIS EQUIPMENT IF YOU HAVE NOT BEEN TRAINED!**

For your personal safety always ensure that you have read and understood the **Operation and Safety Manual** and follow the instructions when installing tooling and using the Super Mini Miller.



**Danger** risk of serious injury or death by electrocution, follow instructions



**Danger** risk of serious injury, follow instructions



**Danger** risk of serious injury from rotating parts

### Personal Protective Equipment (PPE)

Always use Personal Protective Equipment including suitable protective clothing, footwear plus:



Suitable eye protection to protect against sewage, chemicals or dust from irritating eyes.



Suitable ear protection to protect against hearing loss.



Suitable heat and cut-resistant gloves to help prevent any hand injuries. Any open injuries or skin irritations should always be covered to avoid contact with sewage, chemicals or dust.



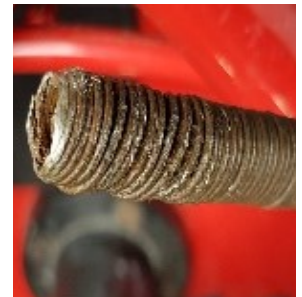
Suitable respirator to prevent any dust or fumes being inhaled or consumed, which could cause occupational asthma or dermatitis.

**Please Note: Only use Picote Tools designed for 1/3" Shaft Recommended diameter range 2-4"**

### BEFORE OPERATION

**Before installing tooling always ensure Super Mini Miller is turned off and unplugged.**

- Always lay the Super Mini Miller down horizontally on the floor during operation.
- Always inspect the flexible shaft before each use. If there are potential weak points, or the shaft is damaged, cut off the damaged length using a band saw or replace the entire shaft as needed.
- Round off any sharp edges of the shaft to avoid cuts and to make it easier to insert the shaft into the tooling.
- Check that there is sufficient length of exposed flexible shaft, without its outer casing, to attach tooling and allow for shaft movement.
- Check that all tooling screws have been loosened, so that the shaft can be easily inserted inside the tooling. Position the shaft inside the tooling as far as it will go. Tighten screws starting with the screw furthest away from the shaft end.
- Use a Sleeve over the end of the outer casing to prevent it from melting.



Trim back damaged Shaft



Tighten screws starting with the screw furthest away from the shaft end



Sleeve

Please refer to the Operation and Safety Manual before undertaking any work.  
Ask your Reseller or contact Picote for further information: [support@picotesolutions.com](mailto:support@picotesolutions.com)

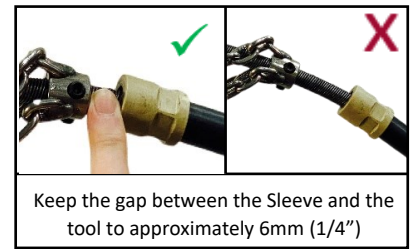
## OPERATOR CHECKLIST



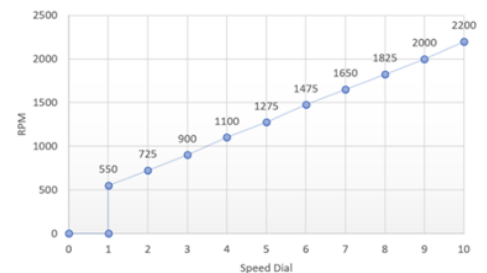
**DO NOT USE THIS EQUIPMENT IF YOU HAVE NOT BEEN TRAINED!**

### STARTING & USING THE SUPER MINI MILLER

- Make sure pipe has been opened & ventilated to prevent gases accumulating.
- Choose the correct size tool for your job. Always use the largest size that will fit inside the pipe and go around any bends.
- Place the Super Mini Miller as close as possible to the pipe opening.
- **Attach a visual marker (tape) on the outer casing of the flexible shaft around 20" from the end of the shaft. The marker will indicate the tooling's location and help prevent possible injury from the rotating parts by alerting you when the tooling is about to exit the pipe.**
- Ensure water is flowing in pipe or vacuum extraction is used (dry cleaning).
- Where water cooling is not used (air/vacuum situations), take breaks every 15-20 minutes, as tooling gets very hot during use.
- Always observe temperature of the outer casing and let the Super Mini Miller cool down after every 30 minute period of constant work.
- **DO NOT USE** with more than one 32' Shaft Extension.
- **DO NOT USE IN REVERSE** as this will cause the Shaft to unravel!
- **Speed Controller is located on the Control Box.** Minimum Speed Setting is recommended when navigating around bends.
- Adjust the speed up to the level which works best for the job.
- **Do not force the tooling through the pipe, let the tool do the work.**
- Too much force or speed may cause the tooling to get stuck, resulting in tooling or shaft breakage and possible pipe damage.
- Use either water or vacuum to remove debris.
- **For safety and efficiency always check** the ventilation openings on the motor are kept clear when working in dusty conditions. If it should become necessary to clear the dust, first unplug the Miller.
- Move the tooling constantly back and forth during operation to prevent overheating the outer casing. This is especially important when working in pipes with tight bends.



Speed Dial located on Control Box



**Always wear heat and cut resistant gloves when handling tooling (always be sure Super Mini Miller has been switched off and unplugged first). Tooling can be cooled down by placing in a bucket of cold water or left to cool in the open air.**



### MAINTENANCE

**Always make sure the Super Mini Miller is fully turned off, unplugged & battery removed!**

- Always inspect the condition of the shaft.
- Every 3 months (or when needed) lubricate flexible shaft with Picote Flexible Shaft Lubricant.
- Once a week remove the hand guard and check the tightness of the screws on the shaft connection. If loose, apply Loctite 542 to the threads and re-tighten.
- Relace any fastener screws immediately if you are unable to fully tighten them due to worn out hex socket heads as the tooling could fall into the pipe.



Please refer to the Operation and Safety Manual before undertaking any work.  
Ask your Reseller or contact Picote for further information: [support@picotesolutions.com](mailto:support@picotesolutions.com)