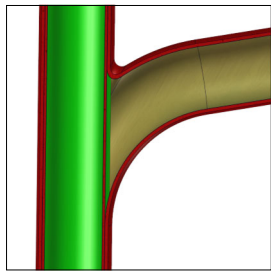
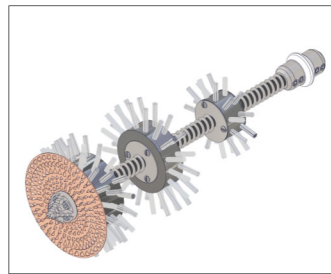


**Tonrohr**

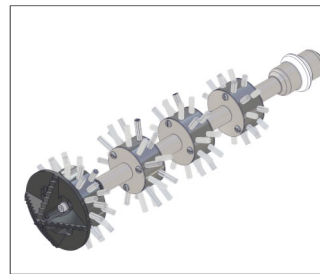
S  
T  
A  
N  
D  
A  
R  
D



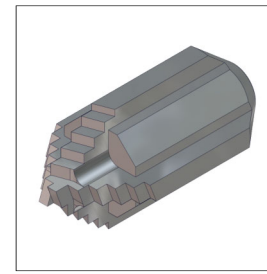
NICHT GELINERTE



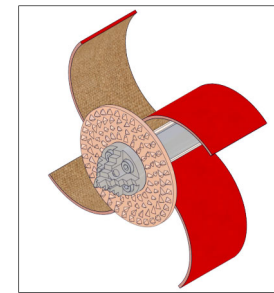
Twister (ungelinerte)



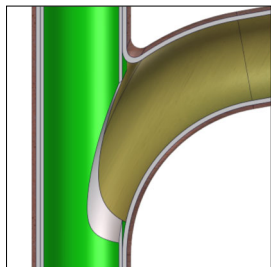
Twister Express (ungelinerte)



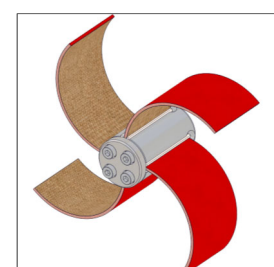
Frontbohrkopf



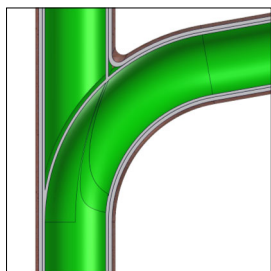
Smart Cutter™



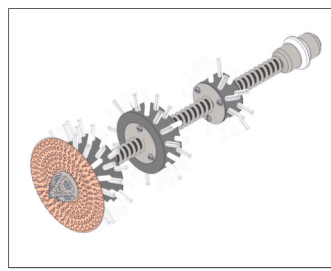
GELINERTE



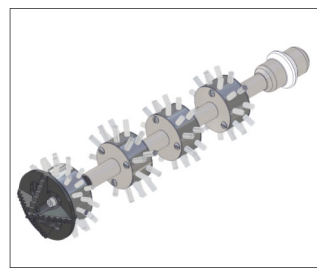
Smart Cutter™



GELINERTE

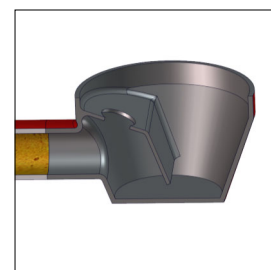


Twister (gelinerte)



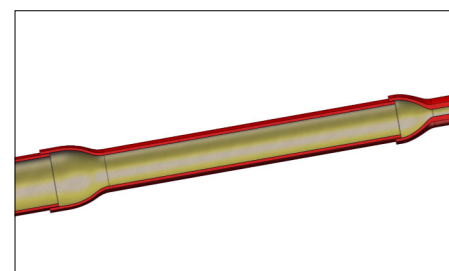
Twister Express (gelinerte)

B  
E  
S  
O  
N  
D  
E  
R  
E

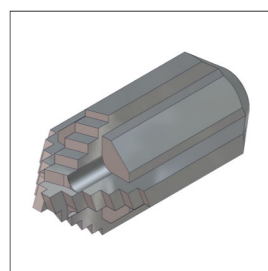


BODENABLAUF

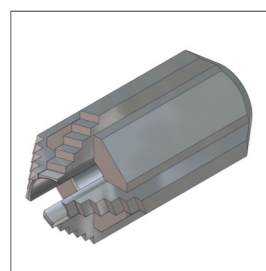
**Im Bezug auf Mini Cleaner und Mini Miller**



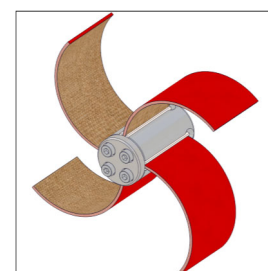
Durchmesseränderungen



Frontbohrkopf



Frontbohrkopf (3D)



Smart Cutter™

**Maxi Miller**

Wellendurchmesser: **12mm**

Länge: **30 m**

Wellenverlängerung:\*\* **10 m**

Empfohlene Rohrgröße : **DN70 - DN150**

**Verfügbare Werkzeuge Größe Durchmesser**

Twister DN100 - DN200

Twister Express DN70 - DN100

Smart Cutter™ DN70 - DN250

Frontbohrkopf DN70 - DN100

Frontbohrkopf (3D) DN70 - DN100

\*\* Wellenverlängerung separat erhältlich