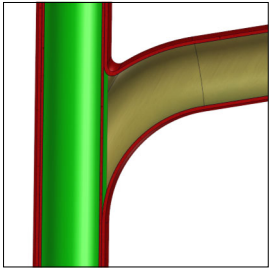
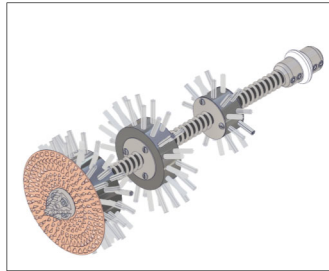


Tonrohr

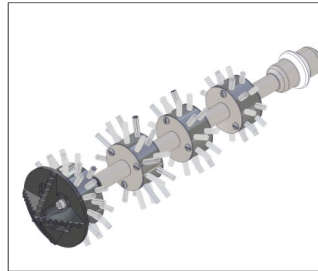
S
T
A
N
D
A
R
D



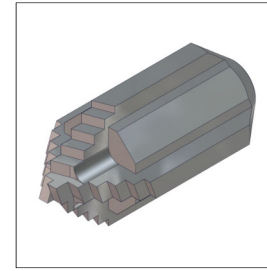
NICHT GELINERTE



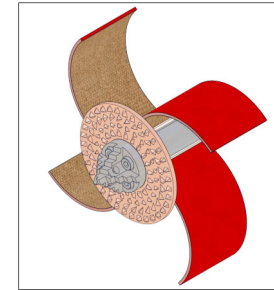
Twister (ungelinerte)



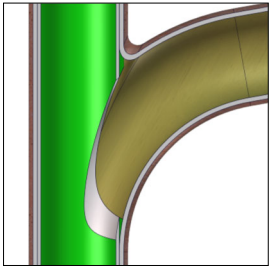
Twister Express (ungelinerte)



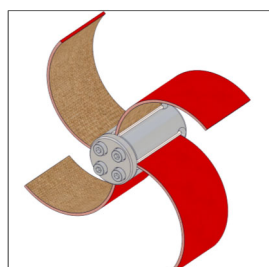
Frontbohrkopf



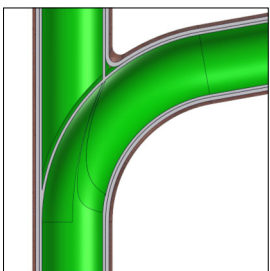
Smart Cutter™



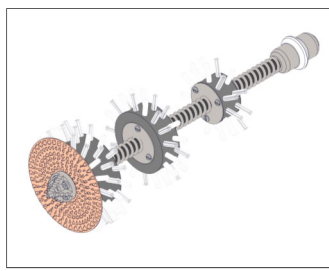
GEÖFFNET



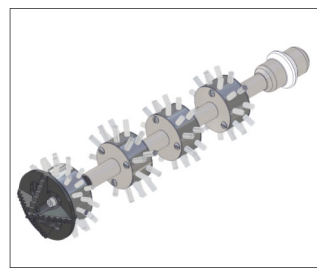
Smart Cutter™



GELINERTE

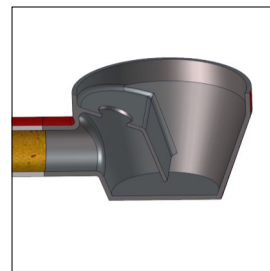


Twister (gelinerte)



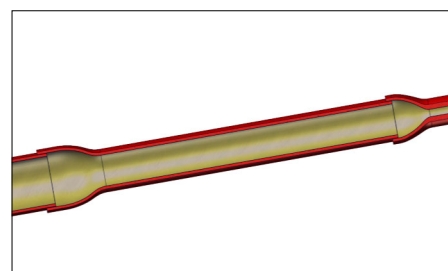
Twister Express (gelinerte)

B
E
S
O
N
D
E
R
E

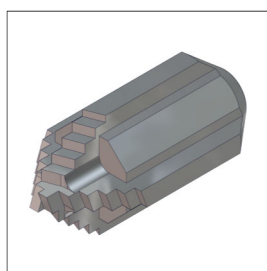


BODENABLAUF

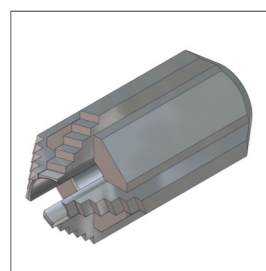
Im Bezug auf Mini Cleaner und Mini Miller



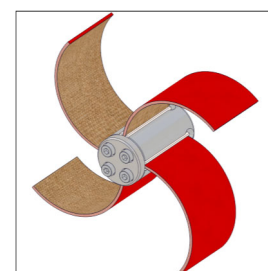
Durchmesseränderungen



Frontbohrkopf



Frontbohrkopf (3D)



Smart Cutter™

Super Midi Miller

Wellendurchmesser: **12mm**

Länge: **20 m**

Wellenverlängerung:** **10 m**

Empfohlene Rohrgröße : **DN70 - DN150**

Verfügbare Werkzeuge Größe Durchmesser

Twister DN100 - DN150

Twister Express DN70 - DN100

Smart Cutter™ DN70 - DN150

Frontbohrkopf DN70 - DN100

Frontbohrkopf (3D) DN70 - DN100

** Wellenverlängerung separat erhältlich