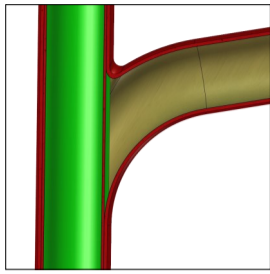
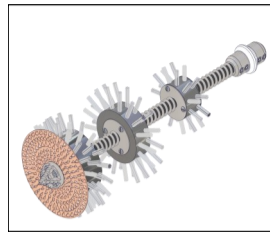


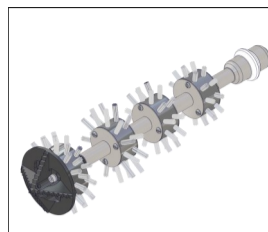
S
T
A
N
D
A
R
D



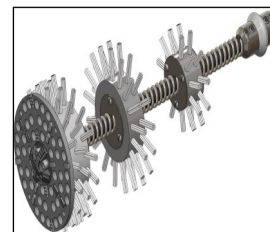
UNLINED



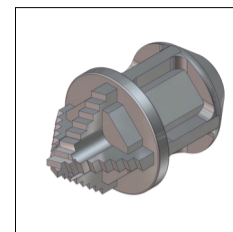
Twister
(unlined pipes)



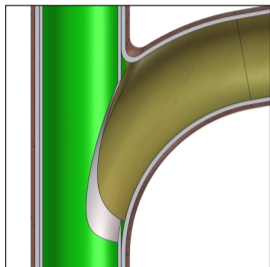
Twister Express
(unlined pipes)



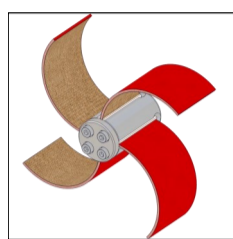
Tiger Twister
(unlined pipes)



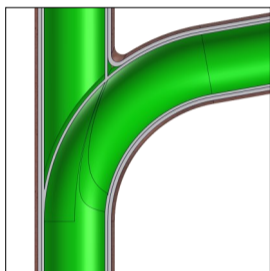
Special Drill Head
(PVC)



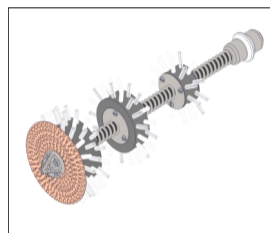
OPENED



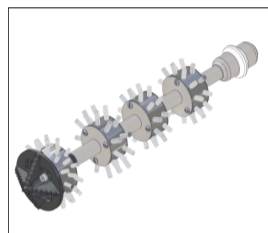
Smart Cutter™



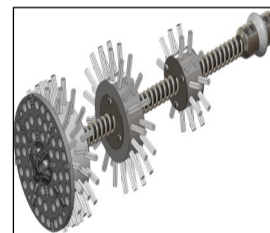
LINED



Twister
(lined pipes)

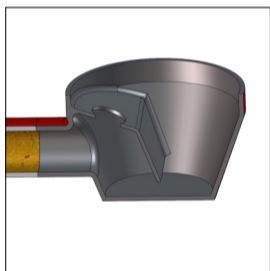


Twister Express
(lined pipes)



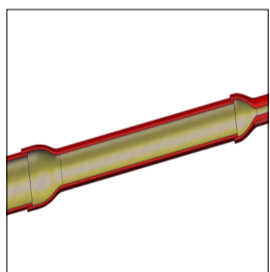
Tiger Twister
(lined pipes)

S
P
E
C
I
A
L

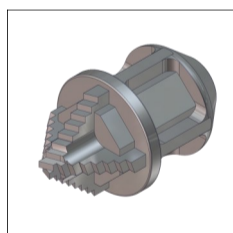


FLOOR DRAIN

Refer to the Mini Cleaner / Mini Miller Range of Machines



SIZE CHANGE



Special Drill Head
(PVC)



Smart Cutter™

Midi Cleaner

Shaft Diameter: 10mm (3/8")

Range: 23 metres (75 ft)

Additional Extension*: 10 metres (32 ft)

Recommended Range: DN50-150 (2-6")

Cutting: DN70-100 (3-4")

Outer Casing: Thin

* Shaft extension sold separately

Available Tools

Available Tools	Size Range
Twister**	DN100 (4")
Twister Express**	DN70 (3")
Tiger Twister**	DN100 (4")
Smart Cutter™	DN50-150 (2-6")
Special Drill Head (PVC)	DN70-100 (3-4")

**12mm tools can be used with the 10mm/12mm Shaft Connector