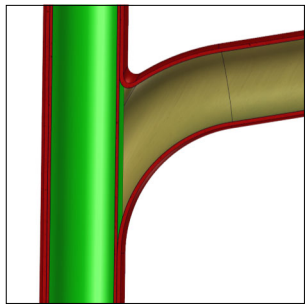


**MINI CLEANER**

**Gussrohr**

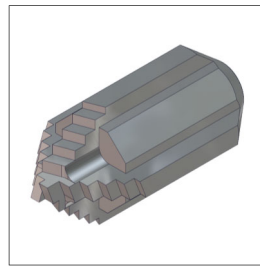
S  
T  
A  
N  
D  
A  
R  
D



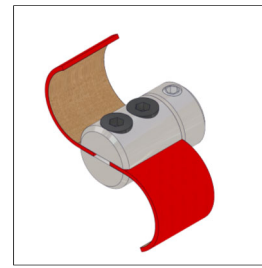
NICHT GELINERTE



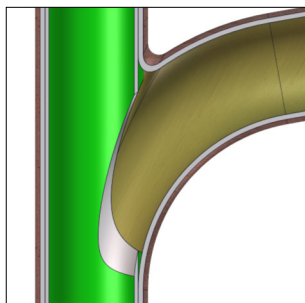
Twister Mini Flexi Express



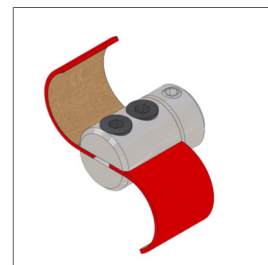
Frontbohrkopf



Smart Cutter™



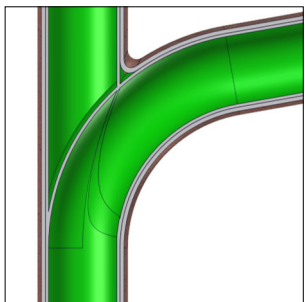
GEÖFFNET



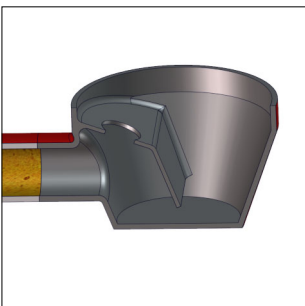
Smart Cutter™



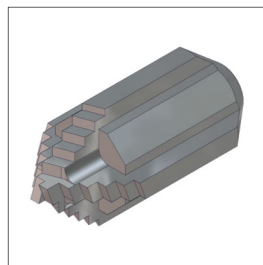
Twister Mini Flexi Express



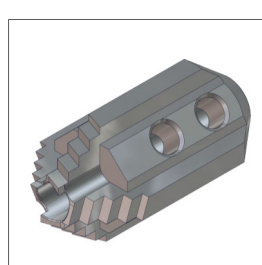
GELINERTE



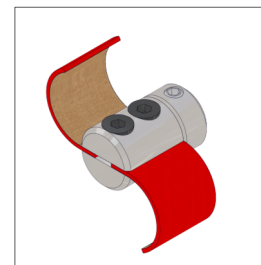
BODENABLAUF



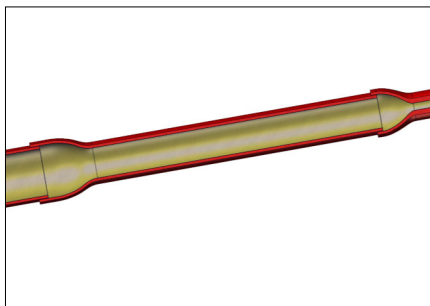
Frontbohrkopf



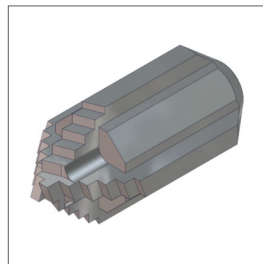
Frontbohrkopf (3D)



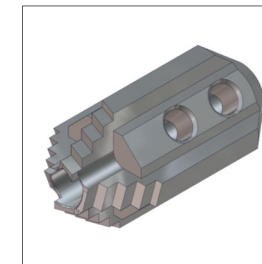
Smart Cutter™



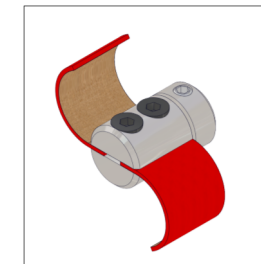
Durchmesseränderungen



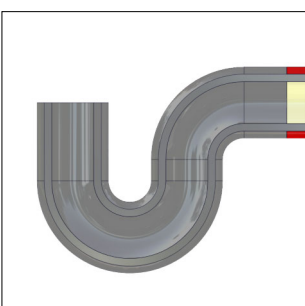
Frontbohrkopf



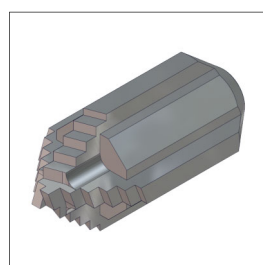
Frontbohrkopf (3D)



Smart Cutter™



P-TRAP



Frontbohrkopf



Smart Cutter™



Twister Mini Flexi Express

**Mini Cleaner**

Wellendurchmesser: **8 mm**

Länge: **16 m**

Empfohlene Rohrgröße : **DN32 - DN75**

B  
E  
S  
O  
N  
D  
E  
R  
E

Die optimale Drehzeit des Mini Cleaner liegt je nach Arbeit zwischen 2-4 (900-2100 U/min).

**Verwenden Sie keine höhere Drehzahl als 4 (2100 U/min), da dies zu einer Überhitzung zwischen der Welle und dem Außengehäuse führen kann**

**Verfügbare Werkzeuge**

**Größe Durchmesser**

Smart Cutter™

DN32 - DN75

Twister Mini Flexi Express

DN50 - DN75

Frontbohrkopf Cutter

DN32 - DN75

Frontbohrkopf Cutter (3D)

DN50 - DN75