

OPERATION & SAFETY MANUAL



⚠ WARNING

These instructions are for your personal safety. Always ensure that you have read and understood these instructions before using the machinery.
SAVE THESE INSTRUCTIONS FOR FUTURE REFERENCE.

TABLE OF CONTENTS

SAVE ALL WARNINGS AND INSTRUCTIONS FOR FUTURE REFERENCE

TOPIC	PAGE
Safety Information	3
Chain Performance	4
Chain Models	5
Small Cleaning Chains	5
Single Original Chains	5
Original Chains	5
Configuring Original Chains	6
Cyclone Chains	7
Tornado Chains	7
Tiger Drill Chains	8
3D Chains	8
User Guide - 3D Chains	9
Special Combination Tools	11
Selecting the Correct Style of Chain	12
Chain Selection by Shaft Diameter	13
Attaching the Chains	14
Using Cleaning Chains	15
Maintenance	17
Practical Tips & Safety Advice	18
Warranty Policy & Procedures	20

To watch practical demonstration videos, take a course, or to download an electronic copy of these Instructions, please visit www.picoteinstitute.com. Please note that videos and courses are not intended as a replacement or alternative to this operation and safety manual, but only as an additional learning tool.

SAFETY INFORMATION

SAVE ALL WARNINGS AND INSTRUCTIONS FOR FUTURE REFERENCE

WARNING

This section contains important safety information. Failure to comply could result in serious injury.

Safety Symbols

Safety symbols are used throughout this manual to draw attention to potential hazards.



Danger risk of serious injury or death by electrocution, follow instructions.



Danger risk of serious injury, follow instructions.



Danger risk of serious injury from rotating parts, follow instructions.



Danger risk of serious injury from hot parts, follow instructions.



Danger do not touch. Risk of injury, follow instructions.

Personal Protective Equipment (PPE)

Always use Personal Protective Equipment including suitable protective clothing, footwear, plus:



Suitable eye protection to protect against sewage, chemicals or dust from irritating eyes.



Suitable ear protection to protect against hearing loss.



Suitable heat and cut-resistant gloves to help prevent any hand injuries. Any open injuries or skin irritations should always be covered to avoid contact with sewage, chemicals or dust.



Suitable respirator to prevent any dust or fumes being inhaled or consumed, which could cause occupational asthma or dermatitis.

CHAIN PERFORMANCE

SAVE ALL WARNINGS AND INSTRUCTIONS FOR FUTURE REFERENCE

PVC Chains

Stainless steel chain links without any carbide teeth.

These chains are safe to use in: Plastic, Copper, Pitch Fibre / Orangeburg, Clay, Concrete and Metal pipes. Great for cleaning, removing scale and tree roots.



Standard Chains

Star carbide (3-ridge).

An efficient general cleaning chain suitable for: Clay, Concrete and Cast Iron pipes. These chains are suitable for cleaning, removing scale and tree roots.

Tiger Chains

Equipped with extra-hard, very long lasting carbide teeth with a lighter chain material to create a gentle but extremely durable option for cleaning cast iron pipes.



Premium Chains

Larger and heavier U carbide (7-ridge) makes it stronger and faster than any other chain on the market. A versatile tool for cast iron pipes. For tough descaling, hard deposits and removing residual concrete or failed liner, including inconsistencies, wrinkles and remains.

Tornado Chains

ONLY for use with the Maxi Power+. With strong hardened stainless steel links instead of carbides, these chains are long-lasting and ideal for descaling and removing hard deposits inside cast iron pipes.



Always select the largest possible Cleaning Chain for the Job

Small Cleaning Chain

This is the preferred tool to go inside the pipe during the cleaning of small diameter pipes with tight 90 degree bends. This chain is supplied **without** Carbide Teeth.



To use these chains you need to first remove the "Sleeve" from the outer casing of the Miller.

Available Diameters:

- 8mm ($\frac{1}{8}$ " Shaft: DN32-40 (1 $\frac{1}{4}$ "-1 $\frac{1}{2}$ "
- 10mm ($\frac{3}{8}$ " Shaft: DN50-70 (2"-3")

Single Original Chain

The Single Original Chains are a lighter and gentler option than standard Original Chains and have greater flexibility.



Available Diameters:

- 8mm ($\frac{1}{8}$ " Shaft: DN50-100 (2"-4")

Original Chain

Original Cleaning Chains are designed to make fast work of pipe cleaning, whether it is tree roots, scale, calcium build-up, concrete, lead, soft blockages, failed gaskets or pipe imperfections. They are a good all-round cleaning option and are often referred to as the starter chain because they are slightly adjustable; this allows you to make minor adjustments to the chain size to compensate for reduced pipe interior for initial cleaning of blocked pipes and then readjust them to their optimal diameter. It is recommended to build up leaders when Original Chains are used to enable faster tool change and prolong the service life of the flexible shaft.



Available Diameters:

- 8mm ($\frac{1}{8}$ " Shaft: DN50-150 (2"-6")
- 10mm ($\frac{3}{8}$ " Shaft: DN70-150 (3"-6")
- 12mm ($\frac{1}{2}$ " Shaft: DN70-250 (3"-10")
- 18mm ($\frac{3}{4}$ " Shaft: DN100-300 (4"-12")

The Original Chains can be used with Special Drill Heads or Tiger Bore. Refer to Special Combination Tools - Page 11 for details.

CONFIGURING ORIGINAL CHAINS

SAVE ALL WARNINGS AND INSTRUCTIONS FOR FUTURE REFERENCE

The Original Chains should always be used on a Leader, which preserves the shaft on the Miller as you do not have to keep cutting the shaft back to use other tools.

How to set up the Original Chains correctly:

1. Place the fully stretched out Original Chain next to the leader
2. Cut the front section of the outer casing , on the leader, just behind the rear connector and set aside
3. Feed the Original Chain over the exposed shaft, ensuring that the chain has not twisted, then lock the front connector onto the steel shaft
4. Take the two outer chains and slowly pull them apart until the measured distance is equal to the bore of the uncleaned pipe
5. Finally check that the chains are not twisted, then lock the rear connector in place
6. During the cleaning operation the operator will need to adjust the size of the chain by moving the rear connector towards the front connector



Note: A section of the leftover outer casing can be placed between the two connectors to prevent the steel shaft from being damaged and/or snapping.

⚠ WARNING

Always check the distance between the two outer chains. The distance should be no greater than the inside diameter of the pipe + 5mm ($\frac{3}{16}$ ")

Always select the largest possible Cleaning Chain for the Job

The Cyclone Chain

The Cyclone Chains are a great option for finishing cleaning because they accurately hone the pipe back to near original condition. They are suitable for use in pipes that are in a bad state or even cracked. The centrifugal force is evenly distributed inside the pipe so it will not hit the sides aggressively. Easily removes hard materials, such as heavy scale, encrustation, tree roots and concrete. The Cyclone is also used to eliminate any excess material, after using either the Twister Liner Remover or Twister Concrete Remover. When cleaning pipes, the Cyclone Chain is normally used after the Original Chain.

The Cyclone Chain should only be used to remove the final 10% of deposits on the pipe wall as the diameter of the chain is fixed and cannot be adjusted.

Available Diameters:

- 8mm ($\frac{1}{8}$ ") Shaft: DN70-150 (2"-6")
- 10mm ($\frac{3}{8}$ ") Shaft: DN70-150 (3"-6")
- 12mm ($\frac{1}{2}$ ") Shaft: DN70-250 (3"-10")
- 18mm ($\frac{3}{4}$ ") Shaft: DN100-300 (4"-12")



Tornado Chains

The heaviest Picote chain type. Only available for the **Maxi Miller Power+** for the removal of heavy scale in cast iron pipes. Featuring strong hardened stainless steel links instead of carbides these chains are long-lasting and ideal for descaling and removing hard deposits inside cast iron pipes. Not recommended for liner removal.

Benefits: The chain stays effective throughout its service life

Tornado Original Chain Diameters:

- 18mm ($\frac{3}{4}$ ") Shaft: DN100-300 (4"-12")

Tornado Cyclone Chain Diameters:

- 18mm ($\frac{3}{4}$ ") Shaft: DN150-300 (6"-12")



Always select the largest possible Cleaning Chain for the Job

Tiger Drill Chain

Original Tiger Chain with an integrated Front Drill Head featuring the long lasting Tiger carbides to cut through roots, partial concrete and lightly collapsed liners. The integrated Front Drill Head is also manufactured with the hardened Tiger carbides for maximum cleaning power and efficiency to tackle tough jobs

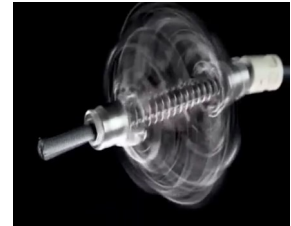


Available Diameters:

- 8mm ($\frac{1}{3}$ " Shaft: DN70-100 (3"-4")
- 10mm ($\frac{3}{8}$ " Shaft: DN70-200 (3"-8")
- 12mm ($\frac{1}{2}$ " Shaft: DN70-250 (3"-10")

3D Chains

The self-adjusting 3D Cleaning Chains were designed to exchange setup time for working time making a cleaner, faster, and more efficient job site. They are self-adjusting depending on RPM which make them great for diameter changes where access is limited since there is no need to readjust during descaling; the 3D chain will keep expanding as it removes material until it reaches its maximum size. 3D chains come on a pre-built leader making them easier to use and decreasing shaft wear. Gone are the days of changing tools every time the pipe size changes or adjusting the chain size during descaling.



Two models available: The Premium version features the proven, superior performance of our larger and heavier U carbide (7-ridge) teeth, while the PVC version without carbides is the safer choice when the condition of the original host pipe material is unknown (or when working in plastic/fragile pipes) to allow you to safely remove blockages and restore flow

Benefits: The chain adapts the pipe shape thus saving working during cleaning enabling the user to clean effectively over size changes of host pipe.

USER GUIDE 3D CHAINS

SAVE ALL WARNINGS AND INSTRUCTIONS FOR FUTURE REFERENCE

Select the largest possible Cleaning Chain for the Job

NOTE! Always select rotation speed according to chain opening / rotation speed table from below when working inside fragile or otherwise brittle cast iron pipes. If the host pipe is intact, a higher rotation speed can be used.

Available Diameters

Pipe Size	Shaft size mm/inches
DN50 (2") to DN70 (3")	8 (1/3") & 10 (3/8")
DN70 (3") to DN100 (4")	8 (1/3") & 10 (3/8") & 12 (1/2")
DN100 (4") to DN150 (6")	10 (3/8") & 12 (1/2")

Operational Guide - Rotation Speed / Chain Opening

Chain mm/inches	Rotation speed	Shaft size mm/inches
DN50 (2") to DN70 (3")	Lev. 2 ^(A) - DN50 (2") / Lev 3 ^(B) Lev. 4 ^(A) - DN70 (3") / Lev 8 ^(B)	8 (1/3")
DN70 (3") to DN100 (4")	Lev. 2 ^(A) - DN70 (3") / Lev 3 ^(B) Lev. 3 ^(A) - DN100 (4") / Lev 6 ^(B)	8 (1/3")
DN50 (2") to DN70 (3")	800 rpm - DN70 (3") 1250 rpm - DN100 (4")	10 (3/8")
DN70 (3") to DN100 (4")	800 rpm - DN70 (3") 1250 rpm - DN100 (4")	10 (3/8") & 12 (1/2")
DN100 (4") to DN150 (6")	800 rpm - DN100 (4") 1100 rpm - DN150 (6")	10 (3/8") & 12 (1/2")

Rotation Speeds

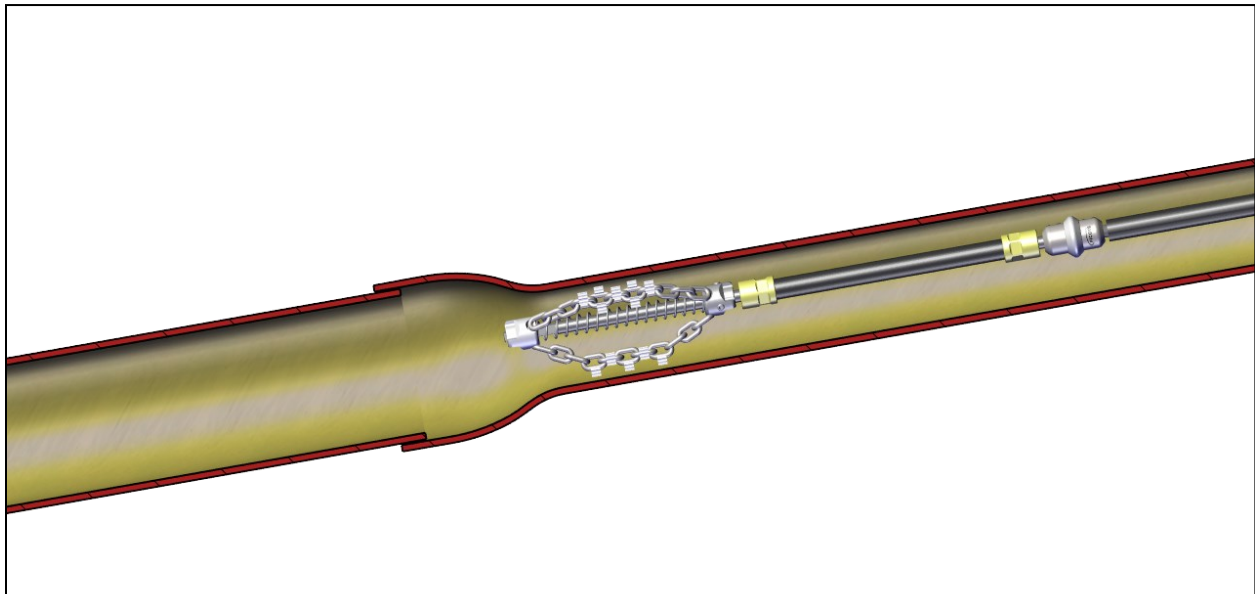
(A) - Standard Machines

(B) - Battery Machines

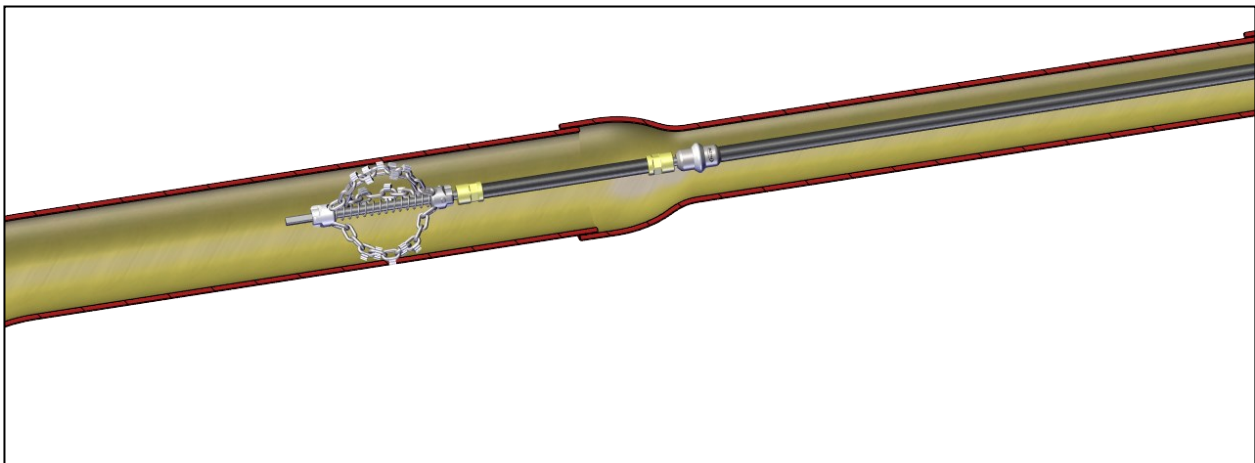


The 3D Chain adapts its size, therefore the operator can easily clean the pipe with size changes or heavy scale without need to change the tool during the cleaning work. The process is presented below.

3D Chain cleaning different pipe diameters.



After moving to larger pipe, the cleaning chain opens up as the operator increases the speed. If the host pipe is fragile, please refer to rotation speed / chain opening guide on page 9.



SPECIAL COMBINATION TOOL

SAVE ALL WARNINGS AND INSTRUCTIONS FOR FUTURE REFERENCE



USER GUIDE: Combining Special Drill Head and Original Chain

A Special Drill Head can be used in the front of the Original Chains to create a tool which can progress forward even in badly corroded or heavily scaled pipes. This combination is also very effective at removing roots.

Operate carefully as this combination makes cleaning work much more strenuous on the Millers and the safety clutch may engage more frequently.



USER GUIDE: Combining Tiger Bore and Original Premium Chain

The Tiger Bore can be used in the front of **Original Premium Chains** to create a tool which can progress forward even in badly corroded or heavily scaled pipes. This combination is also very effective at removing concrete and hard grout from pipes.

Operate carefully as this combination makes cleaning work much more strenuous on the Millers and the safety clutch may engage more frequently.






SELECTING THE CORRECT STYLE OF CHAIN

SAVE ALL WARNINGS AND INSTRUCTIONS FOR FUTURE REFERENCE

The selection of the type of chain is dependent on the restriction of flow through the pipe. Always start with either the Tiger Drill Chains, Original Chains or Cleaning Chains until 90% of the flow has been restored. You then use the Cyclone Chains to remove the last 10%.

The following table below will help you to select the correct chains:

PIPE FLOW	CHAIN TYPE
<p>Pipe Fully Blocked (90% to 100%)</p> 	<ul style="list-style-type: none">• Tiger Drill Chain• Special Drill Head & Original Chain (Combination)
<p>Pipe Partially Blocked (15% to 90%)</p> 	<ul style="list-style-type: none">• Cleaning Chain• Original Chain• Tiger Original Chain• Tiger Drill Chain
<p>Pipe Partial Blocked / Cleaned (Less than 10%)</p> 	<ul style="list-style-type: none">• Cyclone Chain• Tiger Cyclone Chain

The chains can be used to:

- Unblock and Clean Pipes
- Descale and Clean Metal Pipes
- Remove Tree Roots
- Remove Lime Scale / Hard Deposits / Silicates
- Remove Fats Oil and Grease (FOG's)
- Remove Partial Concrete (Tiger Original Chains / Tiger Drill Chains / Premium Chains)
- Grind Failed Linings and Resin (Tiger Drill Chains / Premium Chains)

CHAIN SELECTION BY SHAFT DIAMETER

SAVE ALL WARNINGS AND INSTRUCTIONS FOR FUTURE REFERENCE

The Cleaning Chains have been designed for operation with the **Picote Mini Cleaner**, **Battery Mini Cleaner**, **Mini Miller** and **Battery Mini Miller** with 8mm (1/3") shaft, or **Midi Cleaner** with 10mm (3/8") shaft, or **Super Midi** and **Maxi Miller** with 12mm (1/2") shaft and the **Maxi Power+** with 18mm (3/4") shaft.

The table below shows which type of chain is available by shaft diameter:

CHAIN TYPE	SHAFT DIAMETER				
	6mm (1/4")	8mm (1/3")	10mm (3/8")	12mm (1/2")	18mm (3/4")
Small Cleaning Chains		Y	Y		
Single Original PVC Chains		Y			
Original PVC Chains	Y	Y	Y	Y	
Original Standard Chains		Y	Y	Y	
Original Tiger Chains		Y	Y	Y	
Original Premium Chains		Y	Y	Y	Y
3D PVC Chains		Y	Y	Y	
3D Premium Chains		Y	Y	Y	
Tiger Drill Chains		Y	Y	Y	
Cyclone PVC Chains		Y	Y	Y	
Cyclone Standard Chains		Y	Y	Y	
Cyclone Tiger Chains		Y	Y	Y	
Cyclone Premium Chains		Y	Y	Y	Y
Tornado Original Chains					Y
Tornado Cyclone Chains					Y

WARNING

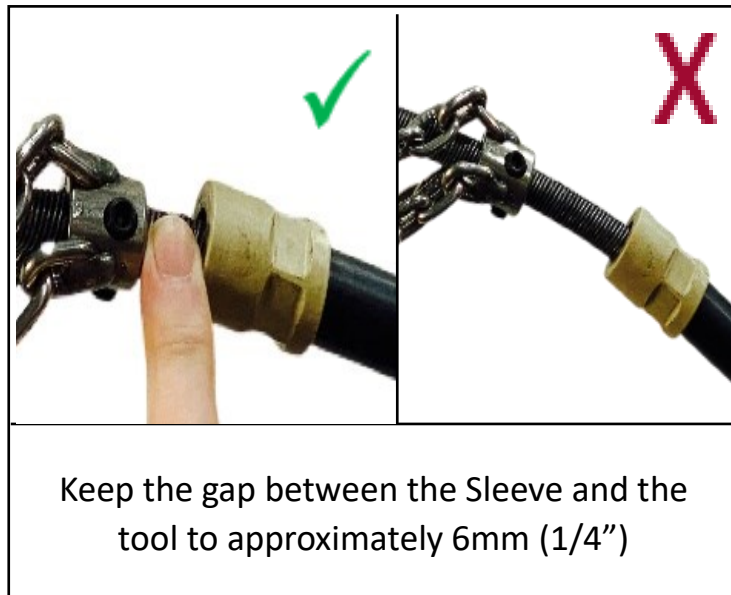
- Plastic, Copper, Pitch Fibre (Orangeburg) or fragile pipes should be cleaned using PVC Chains PVC Chains (chains without carbides)
- In very fragile pipes you should only use Cyclone PVC Chains.
- Where sections of the host pipe are missing, you can also use the Smart Sweeper, Smart Spider or Smart Cutter™ for cleaning.
- As an alternative to the Cleaning Chains you can use the Smart Spider, Smart Sweepers or Smart Cutter™ which are effective tools to remove scale, roots or heavy grease.

OPERATING INSTRUCTIONS

SAVE ALL WARNINGS AND INSTRUCTIONS FOR FUTURE REFERENCE

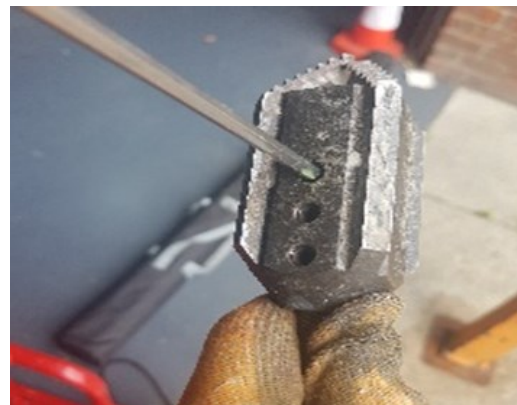
ATTACHING THE CHAINS

- Always inspect the flexible shaft before each use. If there are potential weak points, or the shaft is damaged, cut off the damaged length or replace the entire shaft as needed.
- Round off any sharp edges of the shaft to avoid cuts and to make it easier to insert the shaft into the tooling.
- Run the shaft for 30 seconds and then check that there is sufficient length of exposed flexible shaft, without its outer casing, to attach tooling and allow for shaft movement.



TIGHTENING THE SET SCREWS

- Check that all tooling screws have been loosened so that the shaft can be easily inserted.
- Position the shaft inside the tooling as far as it will go.
- Always tighten the screws starting from the screw furthest away from the end of the flexible shaft (where applicable).



OPERATING INSTRUCTIONS

SAVE ALL WARNINGS AND INSTRUCTIONS FOR FUTURE REFERENCE



Using Cleaning Chains

Before work

Select the Cleaning Chain according to the condition, size and material of the original host pipe. Make sure that the Original Chain opens up completely and the Sockets are aligned. Always select the PVC Chain when working inside Plastic, Copper, Pitch Fibre, Orangeburg or fragile pipes. Ventilate the working site properly. Ensure that the pipes are grounded / earthed. Use a CCTV camera to observe your work.

Ensure water is flowing in the pipe or the vacuum extraction is ready (dry cleaning). Place the Cleaning Chains completely inside the pipe before starting the machine. Cleaning chains are a highly efficient tool to clean pipes. Although it is possible to perform dry grinding if necessary, it is advised that you use water when cleaning with chains. This flushes out all of the debris while you work and prevents build-up of debris or blockages resulting from such a build-up.

During use

Move the chain constantly with a 'back and forth' movement during use. Where possible, start cleaning the pipe from the far end, in about 1m (3 ft) sections, back towards the machine. After each section is cleaned, continue the cleaning process in the next section. Always use a CCTV camera inside the pipe to observe your progress. Adjust the speed while working. Hold the shaft tightly. Be especially careful when working in Plastic Pipes or cleaning tight bends. The Cleaning Chains can quickly generate enough friction heat that the Plastic Pipe could melt if the tool is not moved back and forth continuously. **When using the chains to remove lining material, the friction heat could potentially ignite a fire if the debris is not constantly removed.** In heavily scaled pipes, it is recommended to begin the work with an Original Chain until 90% flow has been restored and then use a Cyclone Chain. You can use the Smart Cutter™ to finalise the cleaning result.



Please read safety information on page 3 before assembly and use.

Do not push the chain with great force—let the chain do the work. If excessive force or high speeds are used the chain might get stuck or break the tool, shaft or the pipe. Use either water or vacuum to remove debris.

If water cooling is not used, take breaks after every 30 minutes of work. The tool head gets very hot during use when not water cooled. Touch only with heat resistant gloves. Tool can be cooled down with water or let it cool in fresh air. Observe the outer casing temperature and allow the Miller to cool down at every 30 minute period of constant work.

OPERATING INSTRUCTIONS

SAVE ALL WARNINGS AND INSTRUCTIONS FOR FUTURE REFERENCE



USING CLEANING CHAINS

AFTER USE



Be careful when removing the chain from the pipe as the chain can be very hot. Always turn the power off before you remove the chain out from the pipe! There is a risk of serious injury or even death!

Check out the condition of the chain and shaft. Replace worn-out parts. If part of the shaft is damaged, it can be removed using a portable band saw or disc cutter/angle grinder. Finally, shorten outer casing accordingly.

The Cleaning Chains can be operated as long as the chain links are solid (all types of chains) and most of the carbides still attached (Standard, Tiger and Premium versions).

RECOMMENDATIONS

- Make sure that Original Chain can open completely.
- The first tool inside the pipe when cleaning should be the Original Chain or 3D Chain followed by the Cyclone Chain. To ensure the perfect finish use the Smart Cutter™ to finalise the cleaning result.
- **Do not power up the Cleaning Chain outside of the pipe!**
- The Cleaning Chain needs to fit completely inside the pipe before use.
- Select the correct size and type of Cleaning Chain for the pipe.
- Always use a CCTV camera while working.
- Move the Cleaning Chain constantly back and forth while cleaning. Be especially careful when working in plastic pipes as the friction heat can quickly melt the pipe .
- Create Leaders for the Original Chains and Drill Chains to enable quick tool changes and extend the service life of the flexible shaft.
- Use Special Drill Head Cutters or Tiger Bores in front of the Original Chains in heavily scaled pipes.

Please read safety information on page 3 before assembly and use.



CARING FOR THE FLEXIBLE SHAFT

The Flexible Shaft is pre-treated with **Picote Flexible Shaft Lubricant (135000020)** and the casing replaced prior to shipping. Always inspect the condition of the Flexible Shaft and apply lubricant between the Flexible Shaft and its outer casing every 2 to 3 months depending on usage. Refer to the relevant machine Operation and Safety Manual for servicing the flexible shaft and its outer casing.



INSPECTION OF THE CHAINS

Check the condition of the chain links regularly. If Cleaning Chain links are worn or are cracked, the Chain needs to be changed.

The Standard, Tiger and Premium Cleaning Chains can still be used if most of the carbides are attached, although they may be less effective and cleaning may take longer depending on the number of carbides that are missing.



FASTENER SCREWS

If you are unable to tighten the fastener screws properly, due to worn out hex socket heads, replace the fastener screws immediately. Always use Loctite 542 on the screw threads to prevent the screws from vibrating loose. Otherwise, the "Cleaning Chain" or "Tool" can fall into the pipe during use.



TRAINING

For information about product training and support contact Picote Solutions: training@picotesolutions.com or contact your authorised Picote Reseller.

Here are some useful tips on how to get the most out of your Picote system. Always use the recommended tools for maintenance and in the intended manner, to avoid personal injury.



CUTTING THE FLEXIBLE SHAFT



Always inspect the Flexible Shaft before each use. Run the machine for 30 seconds, in clockwise direction, to allow the shaft to return to its resting position. If there are potential weak points, or the shaft is damaged, cut off the damaged length using a bandsaw. For most tools, the shaft should extend ~40mm (1 ½”) past the casing. Hubs and Original chains without a leader require more exposed shaft.

CUTTING THE OUTER CASING



Always inspect the outer casing before each use. The easiest and safest way to shorten the outer casing to the correct length is using a Sheath Cutter. Only the necessary amount of bare shaft should be exposed at any time.



SHAFT ROUNDER



The Shaft Rounder is used to smooth the end of the Flexible Shaft, preventing the user from being cut by the otherwise sharp metal edge and making it easier to install tooling.



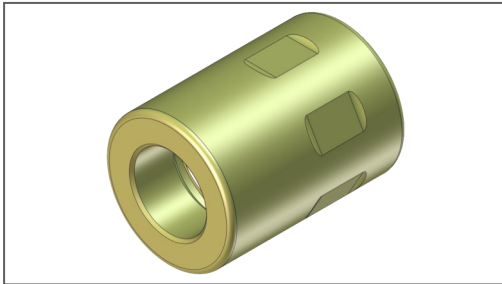
PRACTICAL TIPS & SAFETY ADVICE

SAVE ALL WARNINGS AND INSTRUCTIONS FOR FUTURE REFERENCE

Here are some useful tips on how to get the most out of your Picote system.
Always use the recommended tools for maintenance to avoid personal injury.

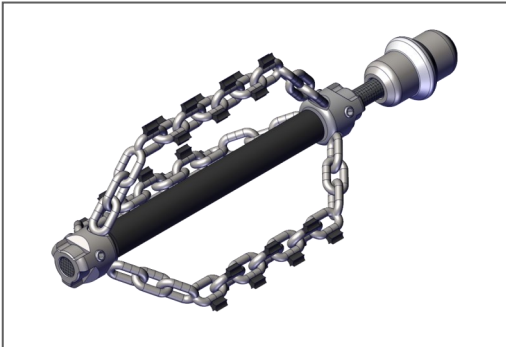


SLEEVE



Always use a Sleeve when working with a Miller. It prolongs the lifetime of the Flexible Shaft and prevents the outer casing from melting in the tool end. Sleeves can be reused when the outer casing has been shortened.

CREATING LEADERS



You can extend the life of the Flexible Shaft and increase productivity on site by making individual leaders for the most commonly used tools. This way you can easily and quickly switch between tools.

Leaders should always be used if possible



ADDING A VISUAL MARKER FOR SAFETY



If not using a Leader, attach a visual marker (tape) on the outer casing of the Flexible Shaft. Place it around 500mm (20") from the end of the shaft. The marker will indicate the tool location and help prevent possible injury from the rotating parts by alerting you when the tool is about to exit the pipe.



WARRANTY POLICY & PROCEDURE

SAVE ALL WARNINGS AND INSTRUCTIONS FOR FUTURE REFERENCE

Limited Warranty:

Picote warrants to the original End User that the Product purchased by such End User will operate in accordance with, and substantially conform to their published specifications when shipped or otherwise delivered to the End User and for a period of one (1) year, except electric motors for which the warranty period shall be six (6) months, provided, however, that Picote does not warrant any claim or damage under this Warranty if such claim or damage results from:

1. Consumable parts or normal wear and tear resulting from use of the Products,
2. Product overload or overheated motor,
3. Regular periodic maintenance of Products,
4. Misuse, neglect, or improper installation or maintenance of the Products, or use of Products not for their intended purpose,
5. Products that have been altered, modified, repaired, opened or tampered with by anyone other than Picote or an authorized Picote Service Centre, or unsuitable or unauthorized spare parts, accessories or third party products when using the Products or;
6. the use of the Products not in compliance with their respective Documentation, user manuals, safety and maintenance instructions, and any usage restrictions contained therein, or
7. accident, fire, power failure, power surge, or other hazard.

Otherwise, the Products are sold AS IS. End User is responsible for using the Products within their specifications and instructions as contained in the Documentation.

EXCEPT AS SPECIFIED IN THIS WARRANTY, ALL EXPRESS OR IMPLIED CONDITIONS, REPRESENTATIONS, AND WARRANTIES INCLUDING, WITHOUT LIMITATION, ANY IMPLIED WARRANTY OR CONDITION OF MERCHANTABILITY, FITNESS FOR A PARTICULAR PURPOSE, NON INFRINGEMENT, SATISFACTORY QUALITY OR ARISING FROM A COURSE OF DEALING, LAW, USAGE, OR TRADE PRACTICE, ARE HEREBY EXCLUDED TO THE EXTENT ALLOWED BY APPLICABLE LAW. TO THE EXTENT AN IMPLIED WARRANTY CANNOT BE EXCLUDED, SUCH WARRANTY IS LIMITED IN DURATION TO THE WARRANTY PERIOD. BECAUSE SOME STATES OR JURISDICTIONS DO NOT ALLOW LIMITATIONS ON HOW LONG AN IMPLIED WARRANTY LASTS, THE ABOVE LIMITATION MAY NOT APPLY. This disclaimer and exclusion shall apply even if the express warranty set forth above fails of its essential purpose.

Revision number: Rev.

Author: Richard Swan

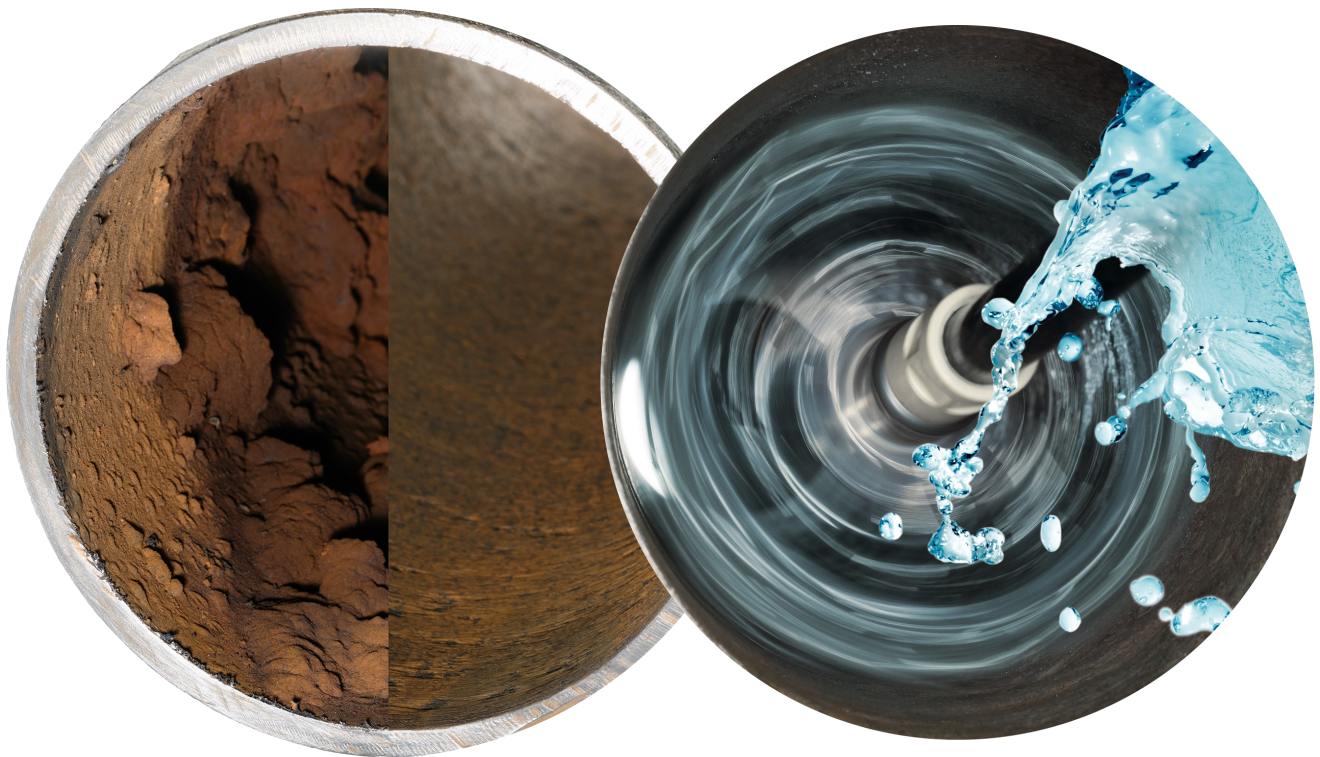
Accepted: Dawn Greig 16.12.22

Date: September 2022

Please Contact:

Your Reseller / Salesperson or Picote

www.picotegroup.com



International Offices

Finland. United Kingdom. USA.

Technical Support

support@picotesolutions.com

Claims

claims@picotesolutions.com

Production & R&D

Pienteollisuustie 24
06450 Porvoo, Finland
support@picotesolutions.com

Authorised Resellers:

www.picotegroup.com/resellers